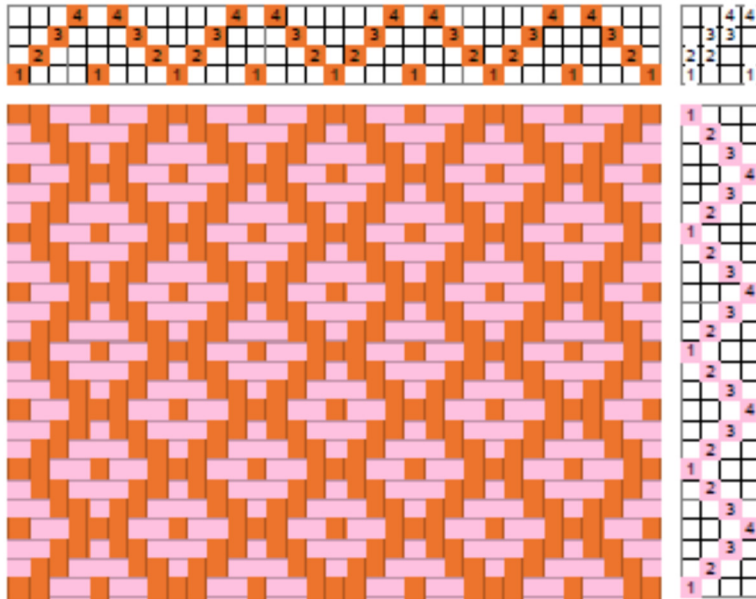


Bird's Eye Twill

If we insert a thread on shaft 1 between a right-handed and a left-handed twill, we obtain the threading for a birds' eye twill, which is in the pointed twill class. On the left is the drawdown



and below the fabric, top on the left (as seen on a rising shed loom) and bottom on the right.

This treadling is often used on a pointed twill (1, 2, 3, 4, 3, 2, repeat, see entry), because it makes a more attractive fabric than the “tromp as writ” treadling of the pointed twill.

